



Device description

PX814 is a professional AC class dimmer with built-in 24 outputs each with a power of 3600W.

The device is powered from three phases and has a system that completely protects against the effects of reverse phase connection. The dimmer allows to control from 6 different sources simultaneously:

- 2 x DMX-512
- 3 x Art-Net
- 24 x analogue inputs (option available to order)

AC + Dimmer is equipped with a color touch screen, four buttons and a knob. Using the buttons and the knob, you can easily navigate through the intuitively prepared menu, in which it is possible to set all the dimmer parameters and view the dimmer status.

| CHANNEL 1 | |
|----------------------|--------------|
| MERGED VALUE: | 0 |
| MERGE: | DMX1 |
| DMX 1: | 1 |
| DMX2: | 1 |
| ARTNET A: | 1 |
| ARTNET B: | 1 |
| ARTNET C: | 1 |
| ANALOG: | 1 |
| OUTPUT: | 0.0% |
| LOAD: | 0.0A |
| FUSE: | OK |
| MAX POWER: | 3.6kW |

PX814 has a built-in merger system with an option to select one of 13 priorities, including permanent activation of any circuit, regardless of the controls. Advanced electronics allow to address each output channel in any way and graphically edit the characteristics of its control (5 characteristics implemented by default and 5 set by the user). The device in option (PX814-B) has switches (On / Off) at each of the outputs that allow manual activation of the output at 100% (the so-called Bypass) – the supply

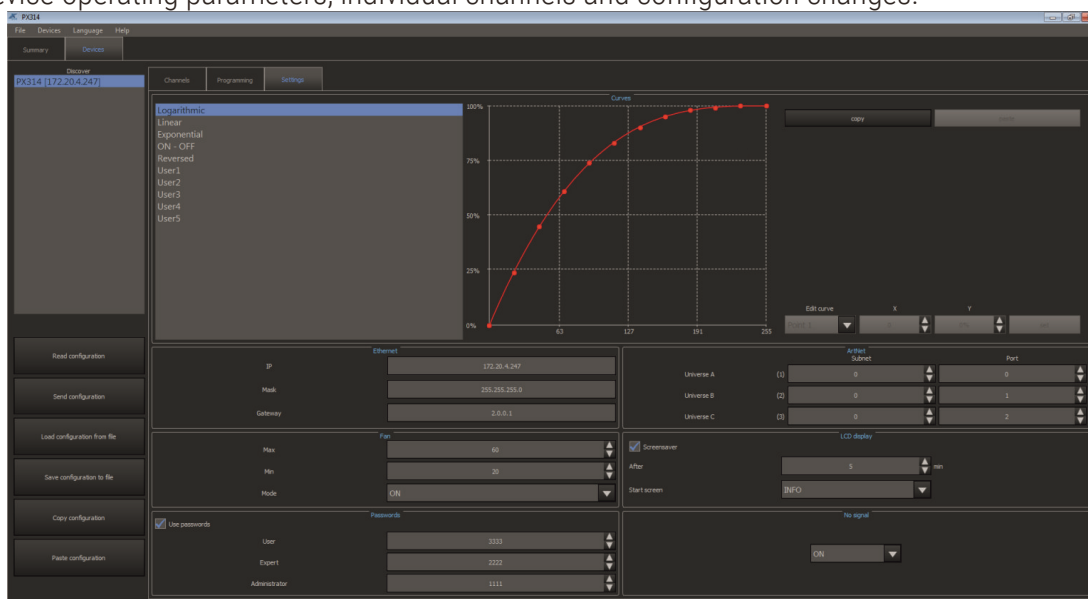
current flows directly to the output bypassing the controller system.

The dimmer also allows to set output voltage and current limits for each channel separately. It is also equipped with a bulb heating system (10 levels) and control of the attached fuse and broken circuit / burnt bulb. The reaction to DMX signal loss can be defined by the user. In addition to the basis options (*ON*, *OFF*, *HOLD*, *SLOW TURN OFF*), 64 stages and the program are available to be defined.

Built-in "soft-start", "soft-on" and "even-off" systems ensure reliable operation in harsh conditions. Direct detection of zero of the network and optical insulation of DMX input guarantee high resistance to interface.

PX814 has a solid metal housing with an efficient cooling system, adapted for wall mounting.

Software is available for the device that can be downloaded from the manufacturer's website (<https://pxm.pl/>), which allows to connect with up to 16 dimmers at once. The application allows live view of the device operating parameters, individual channels and configuration changes.



Models available

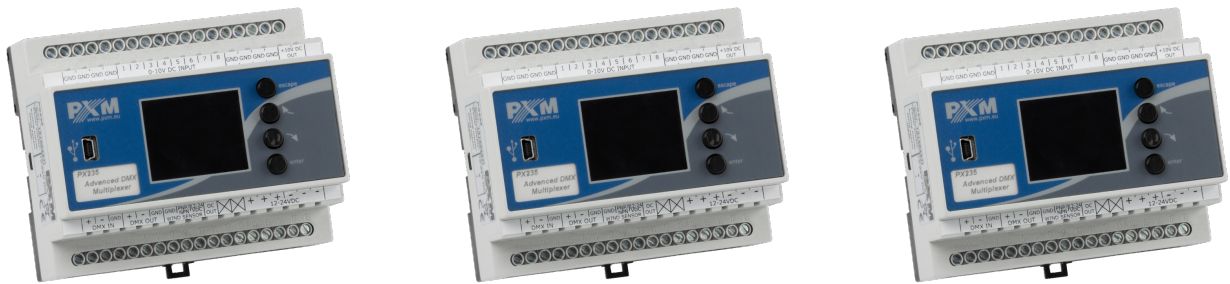
Below is a description of the PX814 model markings with their explanation:

PX814
 PX814 – ½
 PX814 – B
 PX814 – B – ½
 PX814 – R
 PX814 – R – ½
 PX814 – R – B
 PX814 – R – B – ½

- the standard version has 24 outputs protected by two residual current circuit breakers,
- **B** – a cabinet with switches at each output (so-called Bypass) – the supply current flows directly to the output, bypassing the regulator circuit,
- ½ – the cabinet have 12 outputs (half of the standard version),
- **R** – each output is individually protected by a residual current device.

Version on request

- additional 24 analog inputs when using three PX235 modules

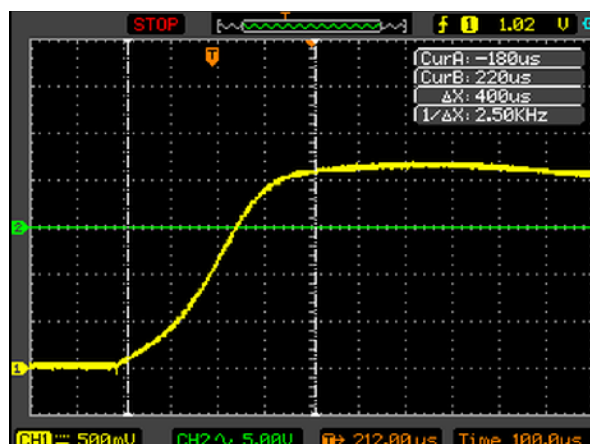


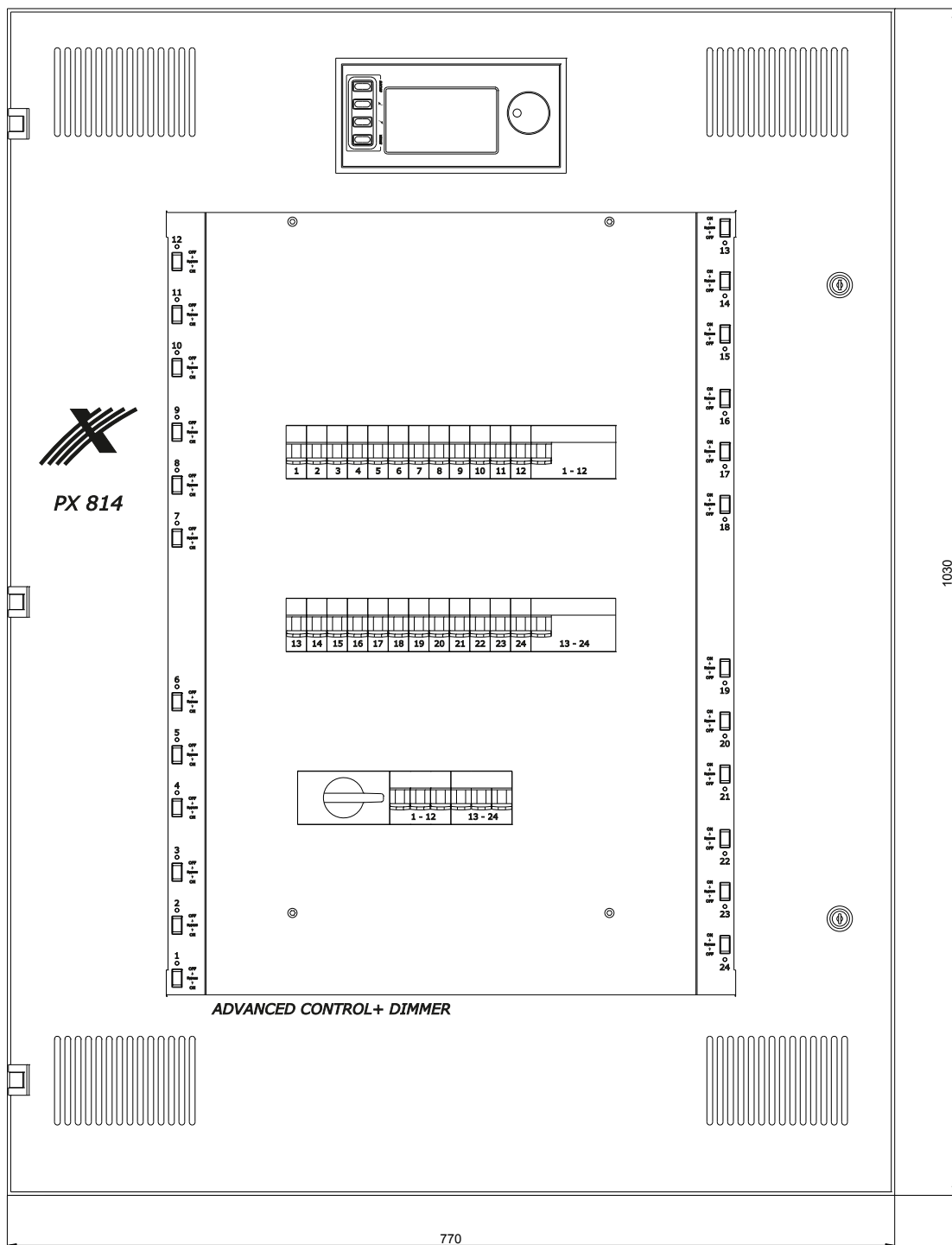
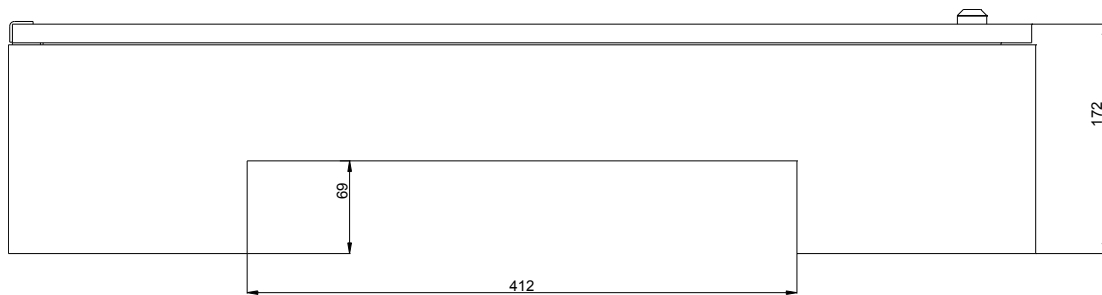
- additional PX387 SwitchDimm DMX Controller module, which allows for smooth control of the circuits or in the "on / off" mode with a dedicated smartphone application (with Android™)



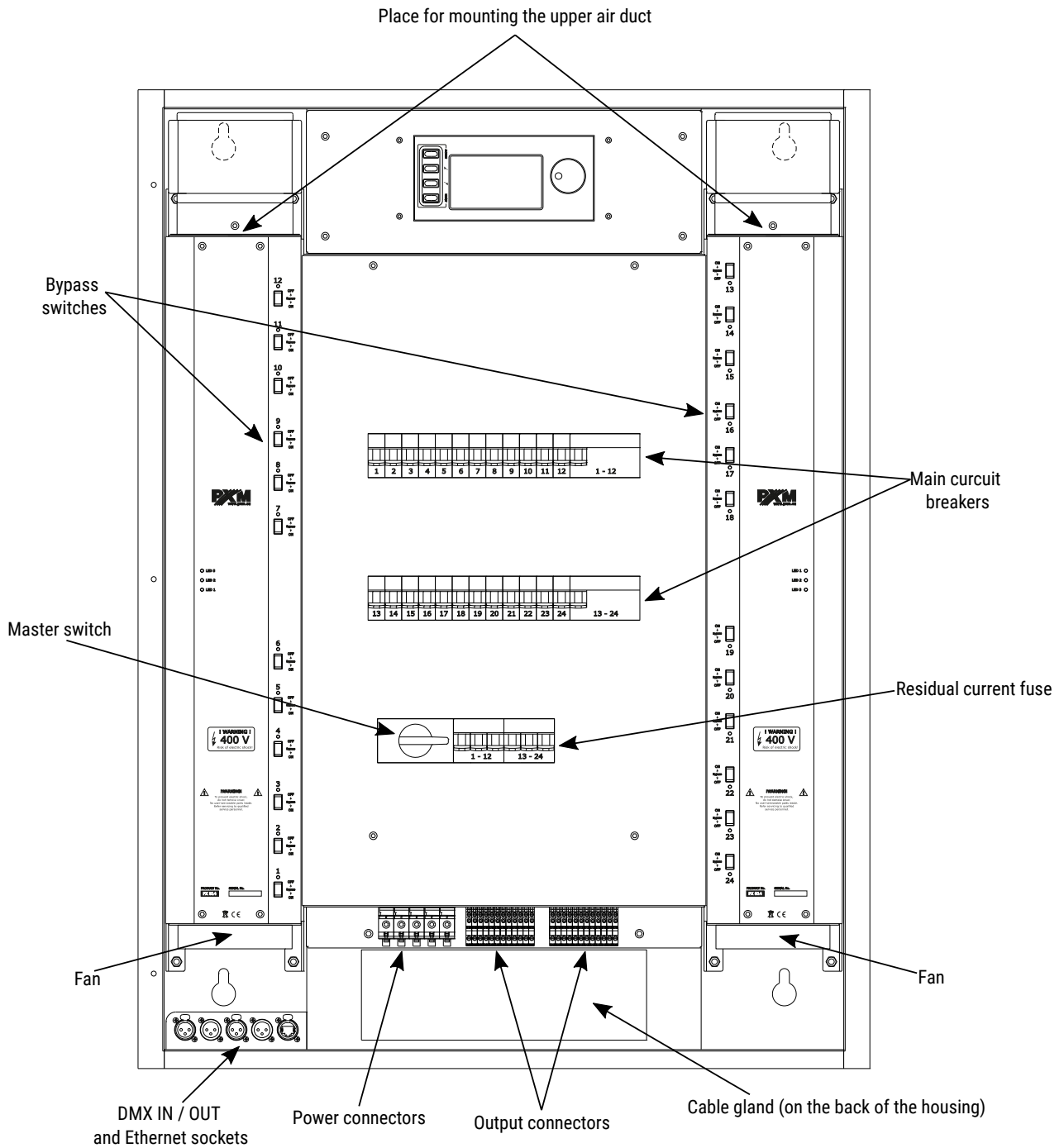
- version with continuous resistive load per channel: 1300W or 2300W

Up-slope time at the interference suppression choke: $\sim 380\mu\text{s}$





Connection diagram



Technical data

| | |
|------------------------------------|--|
| type | PX814 |
| DMX input lines | 2 |
| Art-Net Universe | 3 |
| optically insulated DMX line | yes |
| circuit break detection | yes |
| overvoltage protection of DMX line | yes |
| faulty circuit control | yes |
| residual current protection | yes (the ability to protect each circuit individually in option – R) |
| resolution of control | 8 or 16 bit |
| touch screen resolution | 480 x 272px (4,3") |
| preheat | yes |
| input merge | yes (13 priorities) |
| output power limiter | yes |
| attenuation | according to standard PN-EN 55014 |
| output carrying capacity | 3600W – continuous resistive load 2400VA – continuous inductive load (conventional and neon transformers) |
| output protection | full electronic protection + automatic 16A fuses |
| built-in master switch | yes |
| fans | electronic control |
| input slots | 35mm ² terminals |
| output slots | 4mm ² terminals |
| power supply | 3 x 230V AC |
| current consumption | 3 x 128A (at full load) |
| weight | 75kg |
| dimensions | width: 770mm height: 1030mm depth: 172mm |

NOTE! The information contained in the Technical data relates to the standard version (24 x 3600W).

“Art-Net™ Designed by and Copyright Artistic Licence Holdings Ltd”

